

“ROEN STUBE”

P.ED. 560 - C.C. CAVARENO



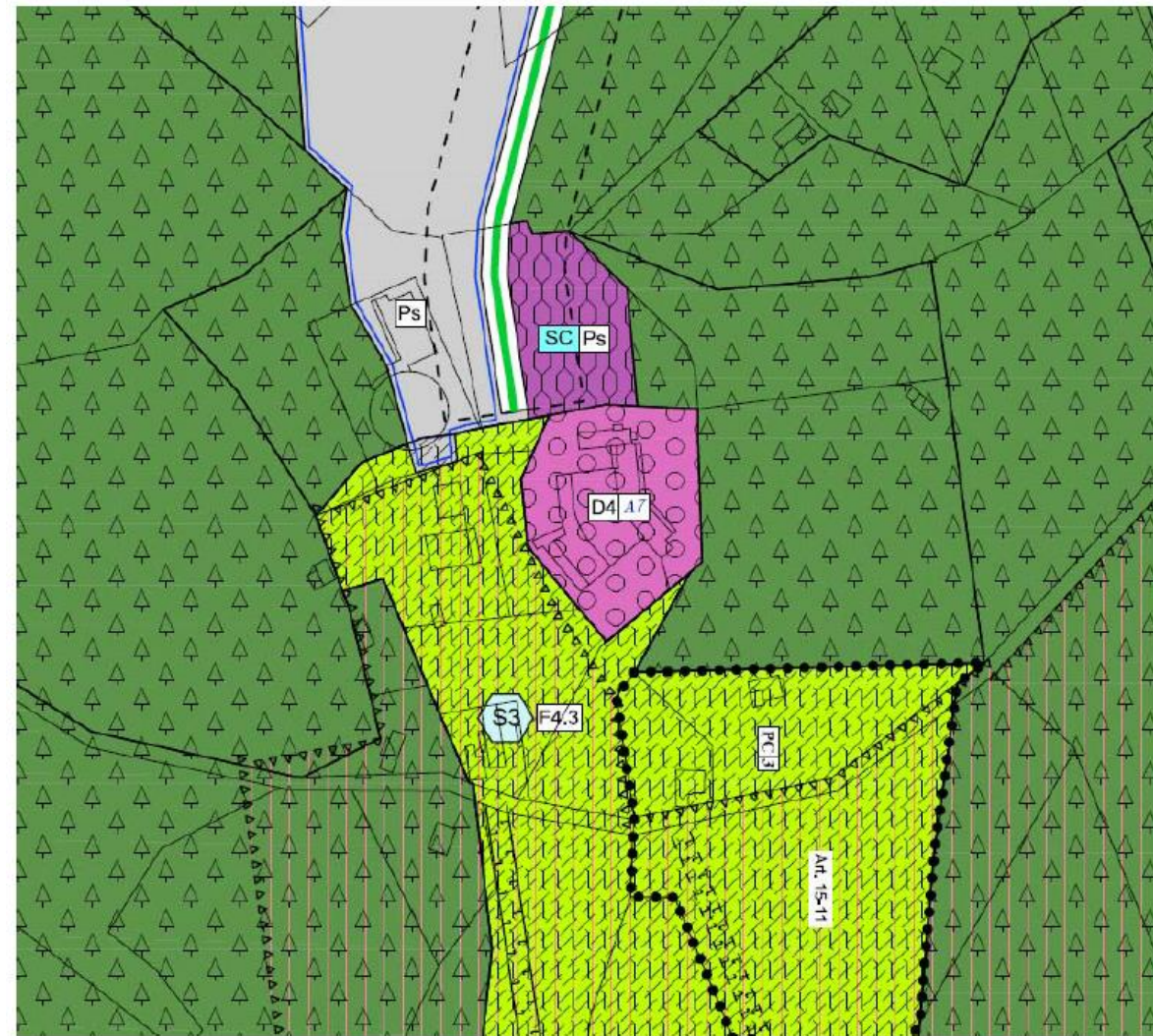
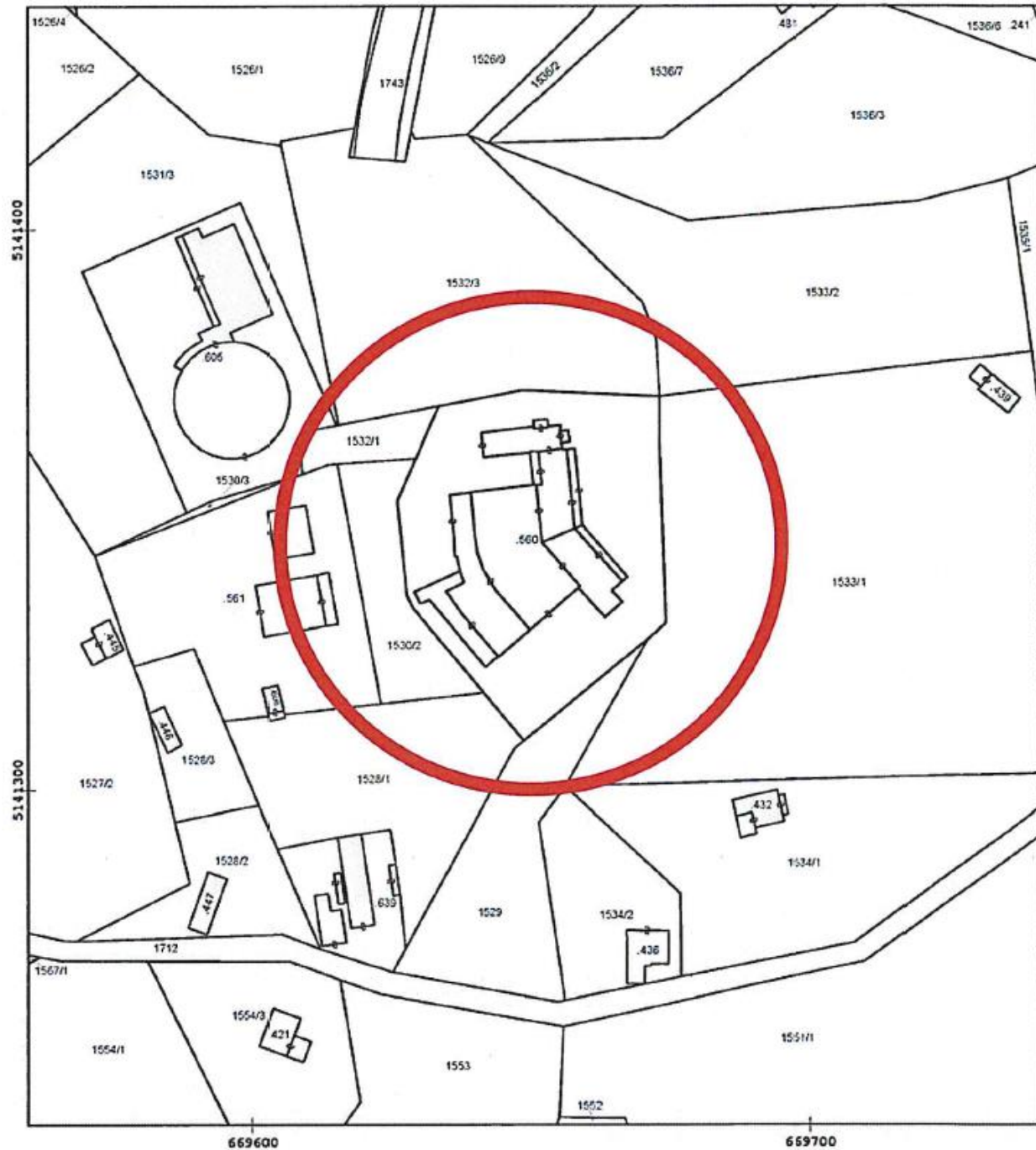
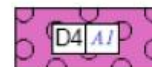


Fig. 6 estratto PRG VARIANTE



D4 - Aree alberghiere

Art. 17

Fig. 7 legenda PRG VARIANTE



comune: Cavareno

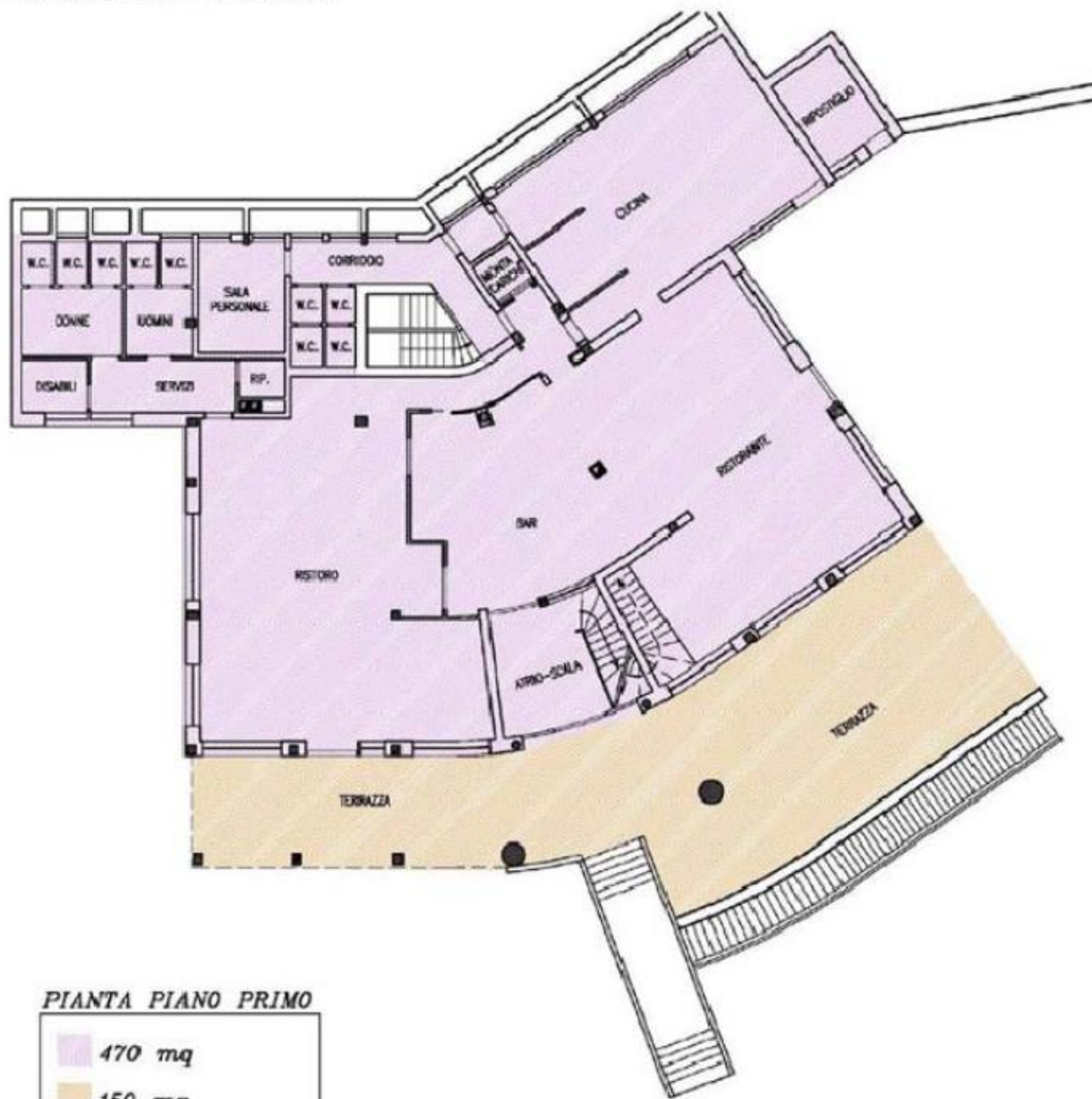
indirizzo: località Campi da golf n. 22

CAP: 38011

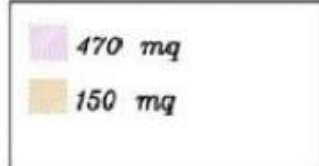
PIANTA PIANO TERRA (SEMINTERRATO) – Scala a vista



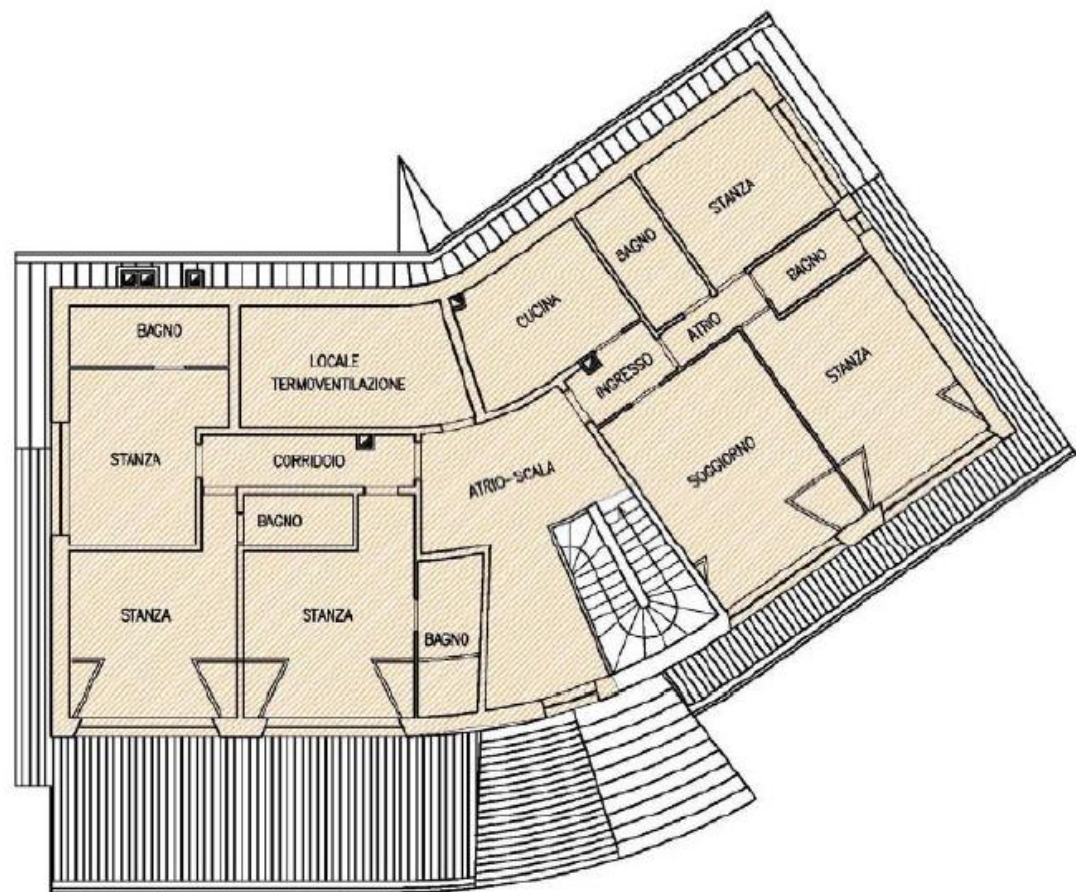
PIANTA PRIMO PIANO- Scala a vista



PIANTA PIANO PRIMO



PIANTA PIANO SECONDO - Scala a vista



PIANTA SECONDO PIANO

